

# CLEVER UNDERLAY

Quality underlay options for all floorboards



**CLEVER CHOICE**

✓ Quality ✓ Style ✓ Value

*Fashion in flooring*



# WHEN SOUND MATTERS!

## Reflective Noise

Reflective noise is the experience when you walk on your completed flooring system. The amount of noise you hear will depend on the type of underlay you select. When installed under Laminates, Hydro, Hybrid, Engineered Timbers or Bamboo floating floors or direct stick, higher density underlays can reduce the rebound noise by up to 40%. You will enjoy a more comfortable, solid feeling and quieter floor in your home.

## Disclaimer

This Acoustic test is provided as is' without any representation or guarantees, express or implied. Clever Choice "Paxwood Pty Ltd" makes no representations or guarantees in relation to this Acoustic Test or the information and materials provided herein. The information and data collected herein are based on industry accepted testing methods. It is intended as descriptive of the performance characteristics and capabilities of Clever acoustic underlays and does not certify for a specific project. Although all efforts are taken to include accurate up to date information, without prejudice to the generality of this paragraph, Clever Choice does not guarantee or warrant that the information in this Acoustic Test is complete, true, accurate or non misleading. This Acoustic Test was provided solely for information purposes. You should not act upon information without consulting Clever Choice or an appropriate Acoustical Consultant. Whilst these tests provide expected results, results, the performance of the product can vary depending on many variables such as but no limited to building design, floor materials and density, room layout and installation method.

## Multi-Level Living Noise

Multi-level noise testing may involve your site being tested with your selected underlay and flooring system installed, depending on your body corporates guidelines. This test would involve an independent professional using a calibrated tapping machine to be placed on the installed underlay and flooring system of choice. In the room below a microphone is used to measure the noise reduction below. It would be expected each site will perform differently depending on the density and thickness of the concrete and also the construction and materials.

Building Code of Aust. 2004 (BCA) established some standardised requirements for multi-level noise. These BCA guidelines were established after much consultation, and offer the only authoritative guideline for such noise in Australia. The BCA states that multi-level noise should not exceed LnT,w of 62. Unfortunately, the standard Strata Title Act only states that "peaceful enjoyment" of adjoining lots must be provided. Such an arbitrary and vague guideline has led many Body Corporates to register special guidelines for their own building.

Please refer to these guidelines carefully when enacted. It is quite clear that floating floor systems work very well because of the inherent isolation afforded by this method of installation. It is also clear that other factors like the use of rugs and runners, soft-sole shoes and the type of use of any upper floor space will also have a profound effect on the amount of noise received downstairs.

For more details, please refer to the Clever Choice website [www.cleverchoice.com.au](http://www.cleverchoice.com.au)

AAAC Star R.	2	3	4	5	6
L'nT,W	65	55	50	45	40
FIIC	45	55	60	65	70
Comments	Below BCA 62	Clearly Audible	Audible	Barely Audible	Normally Audible

Make it a Clever Choice under your floor!



# Clever Underlay

# Silver 2mm



### Application

Our most basic and cost-effective underlay for general floating application with Laminate, Hydro and Oak floorboards <12mm in thickness.

### Suitable for

Home renovations, single level family homes, and most single dwelling projects.

### Features & Benefits

- ✓ Built-in foil barrier to protect against mould and moisture.
- ✓ Lightweight rolls to make transportation and handling easier.
- ✓ Basic acoustic, thermal, and moisture proof underlay for added temperature control and to help you save on your power consumption in your home.
- ✓ Makes floating flooring installation easy.
- ✓ The overlapping foil and tape make it easier to install for optimum performance.

Specifications	Measure
Thickness	2mm
Width x Length	1m x 25m
Roll Size	25m <sup>2</sup>
Density	25kgs/m <sup>3</sup>
Thermal Conductivity	0.042 W/mK
Water Absorption	0.09mg/cm <sup>2</sup>
Durabilty	Lifetime of flooring

Acoustic test results were conducted by Koikas Acoustics Pty Ltd. Test results are site-specific and were compared to the acoustic requirements of Part F5 of BCA (Building Codes of Australia), the standards prescribed by the Association of Australian Acoustical Consultants (AAAC) and City of Sydney Council's DCP 2012 requirements. All measurements were carried out following the guidelines and procedures outlined in AS/NZS ISO 140.7:2006 "Field measurements of impact sound insulation of floors" with the rating determined as per AS ISO 717.2:2004 "Rating of sound insulation in buildings and of building elements". Information gathered and provided by Paxwood Pty Ltd t/a Clever Choice Design Floors is given in good faith as a suggested guide in specifying Clever Choice Underlays, no guarantee or warranty is expressed or implied. No liability is accepted for any loss or damage, direct or indirect that may result from using the information and/or suggestions as actual conditions for use that are beyond our control.



EPE Foam & Aluminium Moisture Barrier | 840121





# Clever Underlay

# Comfort 2mm



### Application

Our all-purpose high-density acoustic foam underlay, for floating application with Laminate, Hydro, Oak, Australian Timbers, and Bamboo flooring <14mm in thickness.

### Suitable for

Home renovations, single, split-level, and double storey homes plus most single dwelling projects and some high-rise developments.

### Features & Benefits

- ✓ Built-in plastic barrier to protect against mould and moisture.
- ✓ Lightweight rolls to make transportation and handling easier.
- ✓ Moderate acoustic, thermal, and moisture-proof underlay for added temperature control and to help you save on your power consumption in your home.
- ✓ Makes floating flooring installation easy.
- ✓ The overlapping plastic and tape make it easier to install for optimum performance.

Specifications	Measure
Thickness	2mm
Width x Length	1m x 25m
Roll Size	25m <sup>2</sup>
Density	110kgs/m <sup>3</sup>
Thermal Conductivity	0.054 W/mK
Water Absorption	0.03mg/cm <sup>2</sup>
Acoustic Performance	5 to 6 star
Durabilty	Lifetime of flooring

Acoustic test results were conducted by Koikas Acoustics Pty Ltd. Test results are site-specific and were compared to the acoustic requirements of Part F5 of BCA (Building Codes of Australia), the standards prescribed by the Association of Australian Acoustical Consultants (AAAC) and City of Sydney Council's DCP 2012 requirements. All measurements were carried out following the guidelines and procedures outlined in AS/NZS ISO 140.7:2006 "Field measurements of impact sound insulation of floors" with the rating determined as per AS ISO 717.2:2004 "Rating of sound insulation in buildings and of building elements". Information gathered and provided by Paxwood Pty Ltd t/a Clever Choice Design Floors is given in good faith as a suggested guide in specifying Clever Choice Underlays, no guarantee or warranty is expressed or implied. No liability is accepted for any loss or damage, direct or indirect that may result from using the information and/or suggestions as actual conditions for use that are beyond our control.



EVA Foam & Clear Plastic Moisture Barrier | 840122





# Clever Underlay

## Green IXPE 2mm



### Application

Our all-purpose high-density IXPE Foam underlay, for floating application with Laminate, Hydro, Oak, Australian Timbers, and Bamboo flooring <14mm in thickness.

### Suitable for

Home renovations, single, split-level, and double storey homes plus most single dwelling projects and some high-rise developments.

### Features & Benefits

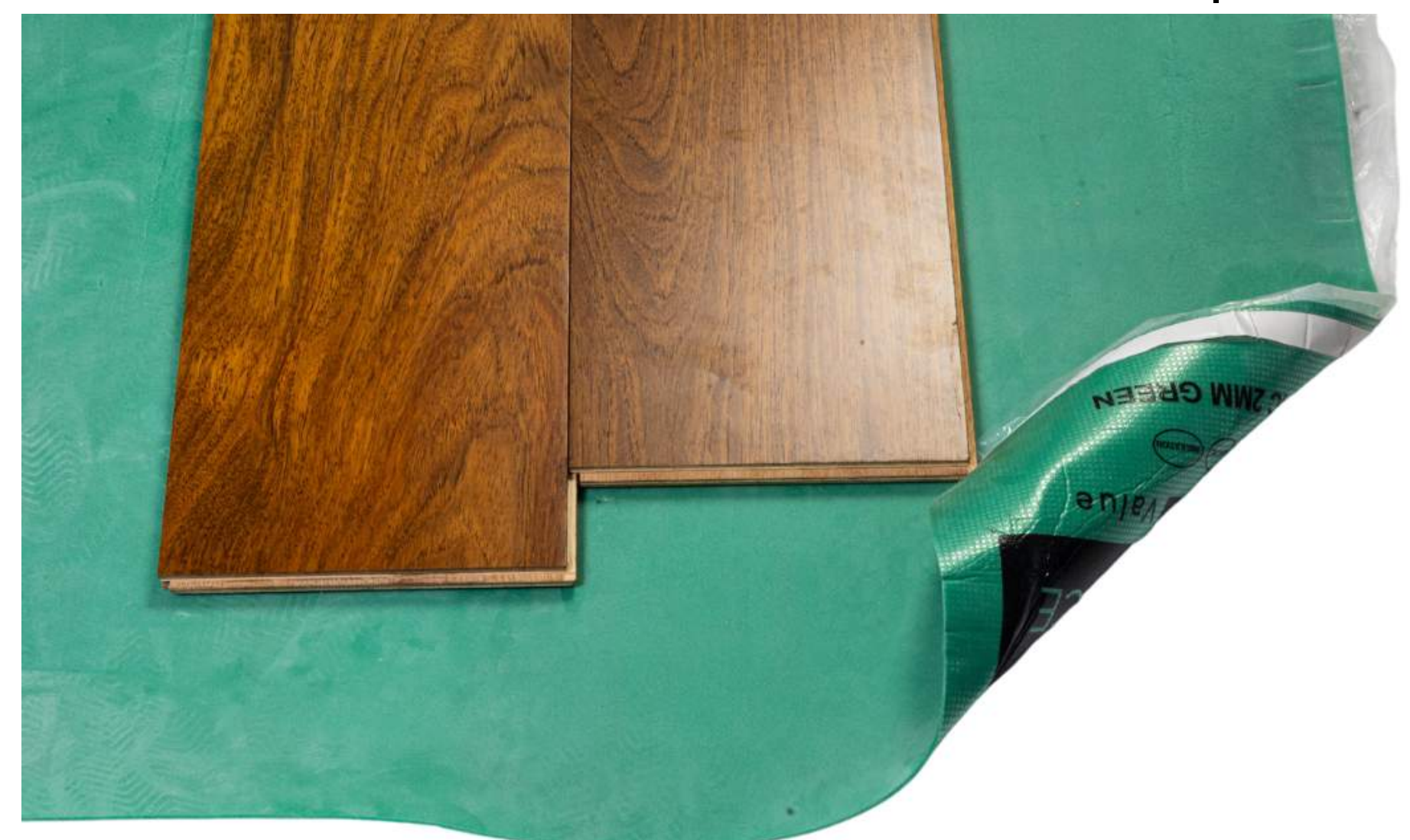
- ✓ Built-in plastic barrier to protect against mould and moisture.
- ✓ Lightweight rolls to make transportation and handling easier.
- ✓ Moderate acoustic, thermal, and moisture-proof underlay for added temperature control and to help you save on your power consumption in your home.
- ✓ Makes floating flooring installation easy.
- ✓ The overlapping plastic and tape make it easier to install for optimum performance.

Specifications	Measure
Thickness	2mm
Width x Length	1m x 20m
Roll Size	20m <sup>2</sup>
Density	33kgs/m <sup>3</sup>
Thermal Conductivity	0.054 W/mK
Water Absorption	0.03mg/cm <sup>2</sup>
Acoustic Performance	5 to 6 star
Durabilty	Lifetime of flooring

Acoustic test results were conducted by Koikas Acoustics Pty Ltd. Test results are site-specific and were compared to the acoustic requirements of Part F5 of BCA (Building Codes of Australia), the standards prescribed by the Association of Australian Acoustical Consultants (AAAC) and City of Sydney Council's DCP 2012 requirements. All measurements were carried out following the guidelines and procedures outlined in AS/NZS ISO 140.7:2006 "Field measurements of impact sound insulation of floors" with the rating determined as per AS ISO 717.2:2004 "Rating of sound insulation in buildings and of building elements". Information gathered and provided by Paxwood Pty Ltd t/a Clever Choice Design Floors is given in good faith as a suggested guide in specifying Clever Choice Underlays, no guarantee or warranty is expressed or implied. No liability is accepted for any loss or damage, direct or indirect that may result from using the information and/or suggestions as actual conditions for use that are beyond our control.



IXPE Foam & Clear Plastic Moisture Barrier | 840191





# Clever Underlay

# Tough 200 μm



### Application

Our all-purpose high-density EVA foam underlay with built-in 200μm building plastic for extra moisture protection, recommended for new slabs or subfloors with suspected high moisture. This underlay can be used for floating application with Laminate, Hydro, Oak, Australian Timbers, and Bamboo flooring <14mm in thickness.

### Suitable for

Home renovations, single, split-level, and double storey homes plus most single dwelling projects and some high-rise developments.

### Features & Benefits

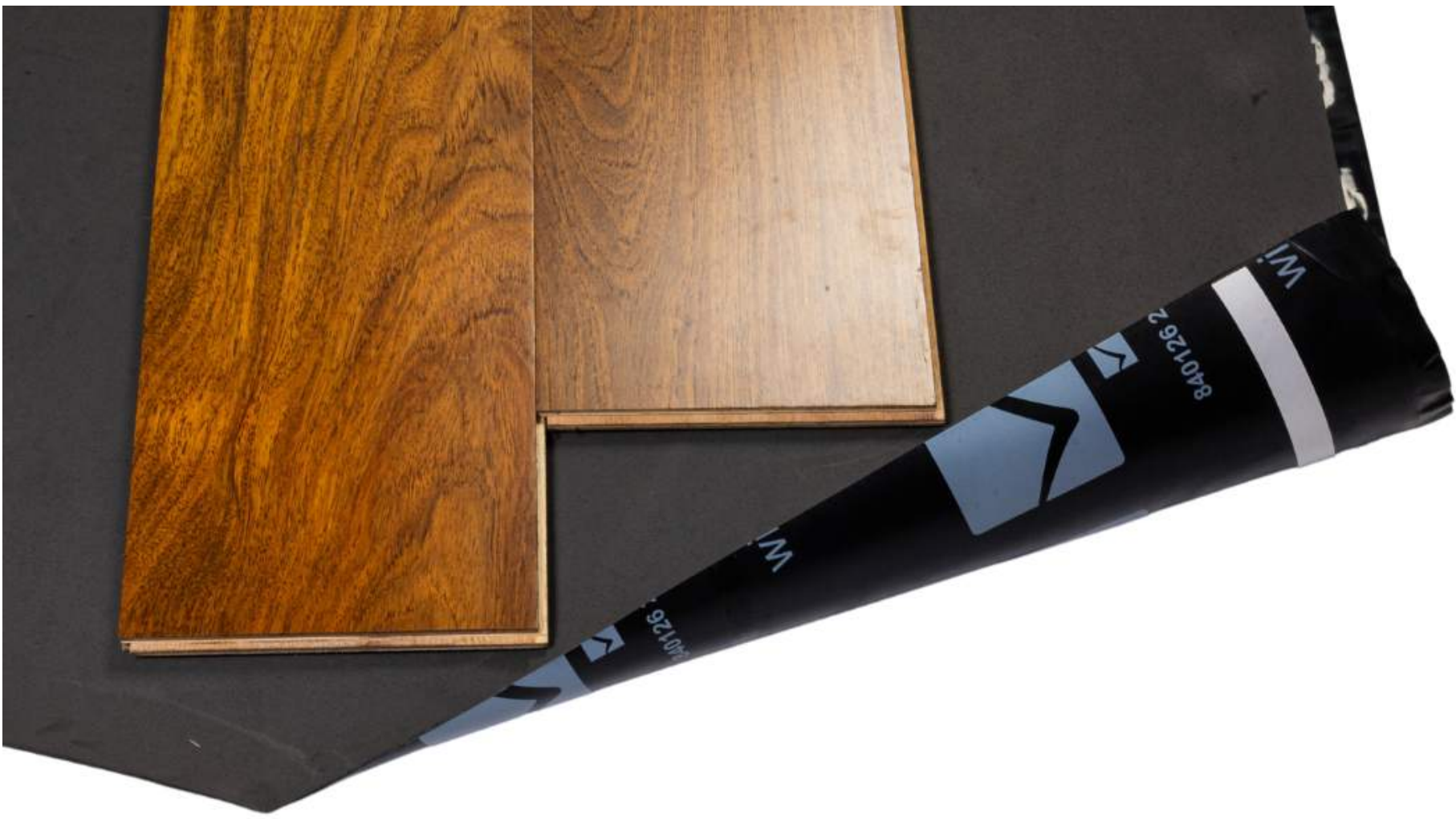
- ✓ Built-in plastic barrier to protect against mould and moisture.
- ✓ Lightweight rolls to make transportation and handling easier.
- ✓ Moderate acoustic, thermal, and moisture-proof underlay for added temperature control and to help you save on your power consumption in your home.
- ✓ Makes floating flooring installation easy.
- ✓ The overlapping plastic and tape make it easier to install for optimum performance.

Specifications	Measure
Thickness	2mm
Width x Length	1m x 20m
Roll Size	20m <sup>2</sup>
Density	110kgs/m <sup>3</sup>
Moisture barrier	200 μm
Thermal Conductivity	0.054 W/mK
Water Absorption	0.003mg/cm <sup>2</sup>
Acoustic Performance	5 to 6 star
Durabilty	Lifetime of flooring

Acoustic test results were conducted by Koikas Acoustics Pty Ltd. Test results are site-specific and were compared to the acoustic requirements of Part F5 of BCA (Building Codes of Australia), the standards prescribed by the Association of Australian Acoustical Consultants (AAAC) and City of Sydney Council's DCP 2012 requirements. All measurements were carried out following the guidelines and procedures outlined in AS/NZS ISO 140.7:2006 "Field measurements of impact sound insulation of floors" with the rating determined as per AS ISO 717.2:2004 "Rating of sound insulation in buildings and of building elements". Information gathered and provided by Paxwood Pty Ltd t/a Clever Choice Design Floors is given in good faith as a suggested guide in specifying Clever Choice Underlays, no guarantee or warranty is expressed or implied. No liability is accepted for any loss or damage, direct or indirect that may result from using the information and/or suggestions as actual conditions for use that are beyond our control.



EVA Foam & Black Plastic Moisture Barrier | 840126





# Clever Underlay

# Sound 3mm



## Application

Our all purpose high-density acoustic foam underlay for floating application with Laminate, Hydro, Oaks, Australian Timber and Bamboo flooring <21mm in thickness.

## Suitable for

Home renovations, single, split-level, multi-storey homes plus most to all high-rise developments, multi-dwelling projects and offices.

## Features & Benefits

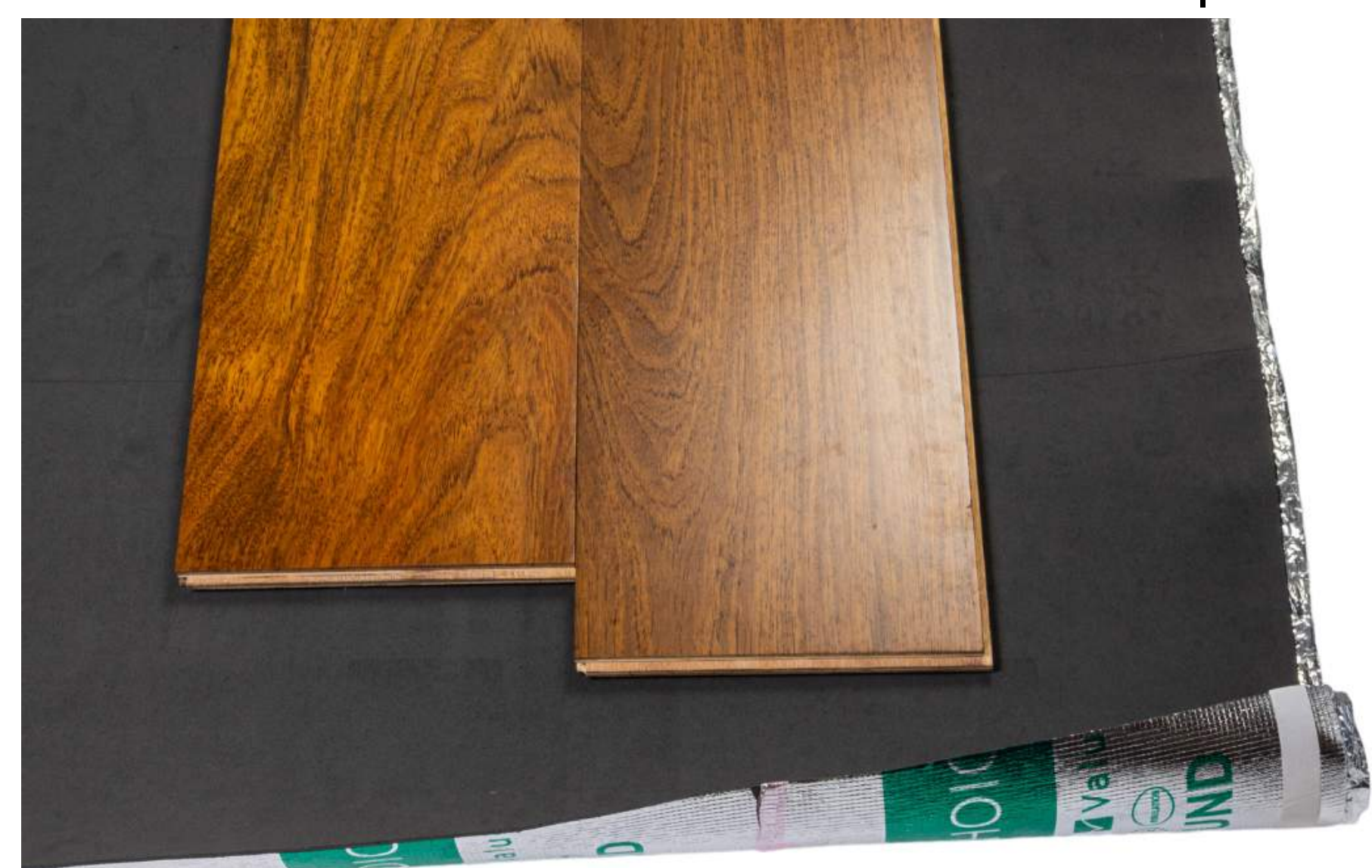
- ✓ Built-in foil barrier to protect against mould and moisture.
- ✓ Lightweight rolls to make transportation and handling easier.
- ✓ High acoustic, thermal, and moisture-proof underlay for added temperature control and to help you save on your power consumption in your home.
- ✓ Makes floating flooring installation easy.
- ✓ The overlapping plastic and tape make it easier to install for optimum performance.
- ✓ Suitable for underfloor heating to add warmth to your home.

Specifications	Measure
Thickness	3mm
Width x Length	1m x 20m
Roll Size	20m <sup>2</sup>
Density	110kgs/m <sup>3</sup>
Thermal Conductivity	0.036 W/mK
Water Absorption	0.02mg/cm <sup>2</sup>
Acoustic Performance	5 to 6 star
Durabilty	Lifetime of flooring

Acoustic test results were conducted by Koikas Acoustics Pty Ltd. Test results are site-specific and were compared to the acoustic requirements of Part F5 of BCA (Building Codes of Australia), the standards prescribed by the Association of Australian Acoustical Consultants (AAAC) and City of Sydney Council's DCP 2012 requirements. All measurements were carried out following the guidelines and procedures outlined in AS/NZS ISO 140.7:2006 "Field measurements of impact sound insulation of floors" with the rating determined as per AS ISO 717.2:2004 "Rating of sound insulation in buildings and of building elements". Information gathered and provided by Paxwood Pty Ltd t/a Clever Choice Design Floors is given in good faith as a suggested guide in specifying Clever Choice Underlays, no guarantee or warranty is expressed or implied. No liability is accepted for any loss or damage, direct or indirect that may result from using the information and/or suggestions as actual conditions for use that are beyond our control.



EVA Foam & Aluminium Moisture Barrier | 840125



Images are an indication of colour only. Variations in colour & appearance are to be expected between images & samples

[www.cleverchoice.com.au](http://www.cleverchoice.com.au)



## Application

Our all purpose high-density acoustic foam underlay for floating application with Laminate, Hydro, Oaks, Australian Timber and Bamboo flooring <21mm in thickness.

## Suitable for

Home renovations, single, split-level, multi-storey homes plus most to all high-rise developments, multi-dwelling projects and offices.

## Features & Benefits

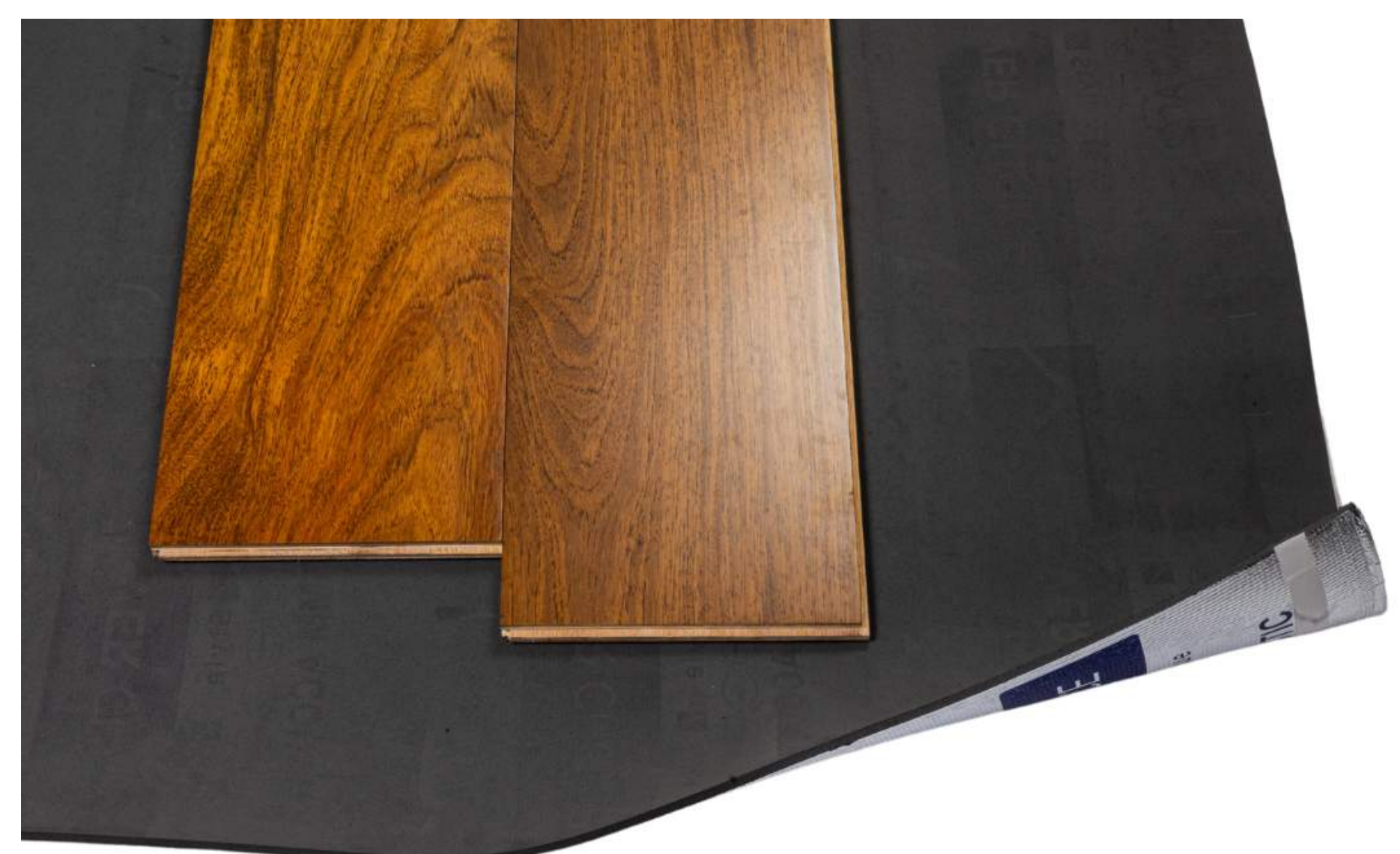
- ✓ Built-in foil barrier to protect against mould and moisture.
- ✓ Lightweight rolls to make transportation and handling easier.
- ✓ High acoustic, thermal, and moisture-proof underlay for added temperature control and to help you save on your power consumption in your home.
- ✓ Makes floating flooring installation easy.
- ✓ The overlapping plastic and tape make it easier to install for optimum performance.
- ✓ Suitable for underfloor heating to add warmth to your home.
- ✓ Raise levels to meet tiles and carpet areas for a seamless finish.

Specifications	Measure
Thickness	2.5mm
Width x Length	1m x 10m
Roll Size	10m <sup>2</sup>
Density	110kgs/m <sup>3</sup>
Thermal Conductivity	0.036 W/mK
Water Absorption	0.02mg/cm <sup>2</sup>
Acoustic Performance	5 to 6 star
Durability	Lifetime of flooring

Acoustic test results were conducted by Koikas Acoustics Pty Ltd. Test results are site-specific and were compared to the acoustic requirements of Part F5 of BCA (Building Codes of Australia), the standards prescribed by the Association of Australian Acoustical Consultants (AAAC) and City of Sydney Council's DCP 2012 requirements. All measurements were carried out following the guidelines and procedures outlined in AS/NZS ISO 140.7:2006 "Field measurements of impact sound insulation of floors" with the rating determined as per AS ISO 717.2:2004 "Rating of sound insulation in buildings and of building elements". Information gathered and provided by Paxwood Pty Ltd t/a Clever Choice Design Floors is given in good faith as a suggested guide in specifying Clever Choice Underlays, no guarantee or warranty is expressed or implied. No liability is accepted for any loss or damage, direct or indirect that may result from using the information and/or suggestions as actual conditions for use that are beyond our control.



EVA Foam & Aluminium Moisture Barrier | 840124





# Clever Underlay

# Rubber 5mm



### Application

Our all-purpose ultimate density acoustic rubber underlay for floating and direct stick application with Laminate, Hydro, Hybrid, Oak, Australian Timber and Bamboo <21mm in thickness.

### Suitable for

Home renovations, single, split-level, and multi-storey homes plus most to all high-rise developments, multi-dwelling projects and all commercial.

### Features & Benefits

- ✓ Quick and easy to install.
- ✓ Resistant to ageing and deformation.
- ✓ Ultimate acoustic, thermal and moisture-proof underlay for added temperature control and to help you save on your power consumption in your home.
- ✓ Protects expansion joints.
- ✓ Made from recycled materials, bound with polyurethane and is PVC free.
- ✓ Suitable for underfloor heating to add warmth to your home.
- ✓ Raise levels to meet tiles and carpet areas for a seamless finish.

Specifications	Measure
Thickness	5mm
Width x Length	1.25m x 10m
Roll Size	12.5m <sup>2</sup>
Density	700kgs/m <sup>2</sup>
Thermal Conductivity	0.14 W/mk
Temperature Resistance	0.132m <sup>2</sup> o K/W
Tensile Stength	200 KPa
Acoustic Performance	5 to 6 star
Compression (0.7MPa)	30%
Recovery (0.7MPa)	> 70%
Durabilty	Lifetime of flooring

Acoustic test results were conducted by Koikas Acoustics Pty Ltd. Test results are site-specific and were compared to the acoustic requirements of Part F5 of BCA (Building Codes of Australia), the standards prescribed by the Association of Australian Acoustical Consultants (AAAC) and City of Sydney Council's DCP 2012 requirements. All measurements were carried out following the guidelines and procedures outlined in AS/NZS ISO 140.7:2006 "Field measurements of impact sound insulation of floors" with the rating determined as per AS ISO 717.2:2004 "Rating of sound insulation in buildings and of building elements". Information gathered and provided by Paxwood Pty Ltd t/a Clever Choice Design Floors is given in good faith as a suggested guide in specifying Clever Choice Underlays, no guarantee or warranty is expressed or implied. No liability is accepted for any loss or damage, direct or indirect that may result from using the information and/or suggestions as actual conditions for use that are beyond our control.



Recycled SBR Rubber | 840127



Images are an indication of colour only. Variations in colour & appearance are to be expected between images & samples

[www.cleverchoice.com.au](http://www.cleverchoice.com.au)



# Clever Underlay

# Cork 3mm



### Application

Our all-purpose ultimate density acoustic cork underlay for floating and direct stick application with Laminate, Hydro, Hybrid, Oak, Australian Timber and Bamboo <21mm in thickness.

### Suitable for

Home renovations, single, split-level, multi-storey homes plus most to all high-rise developments, multi-dwelling projects and all commercial.

### Features & Benefits

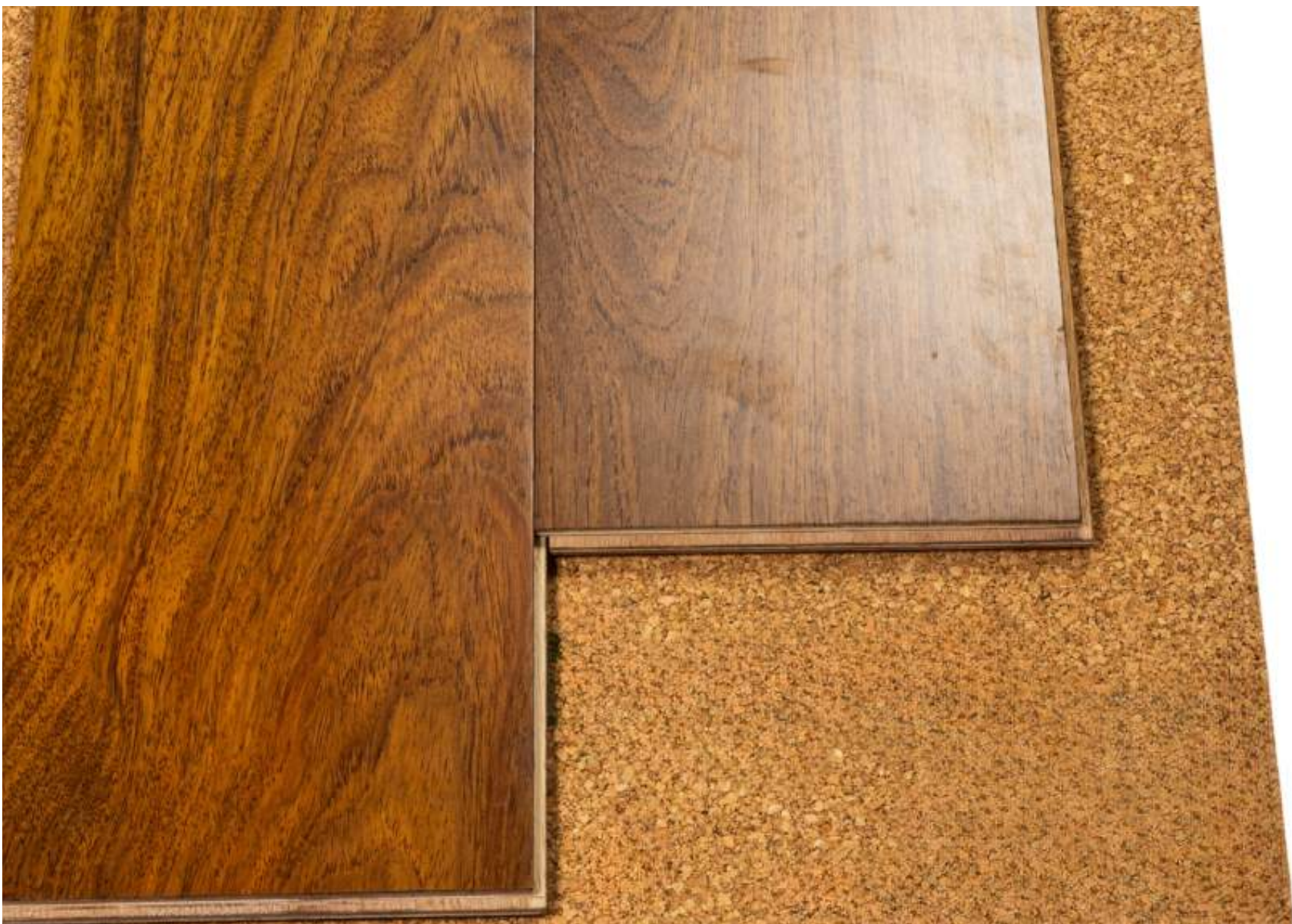
- ✓ Non-toxic, natural, environmentally friendly and fire retardant
- ✓ Lightweight rolls to make transportation and handling easier.
- ✓ High acoustic, thermal, and moisture-proof underlay for added temperature control and to help you save on your power consumption in your home.
- ✓ Suitable for underfloor heating to add warmth to your home.
- ✓ Stress crack protection for floor coverings.
- ✓ Does not absorb water or support the growth of mould in moist situations.

Specifications	Measure
Thickness	3mm
Width x Length	0.5m x 1m
Roll Size	100sheets/50m <sup>2</sup>
Specific Weight	150-200kgs/m <sup>2</sup>
Thermal Conductivity	0.038 W/mk
Thermal Resistance	0.132m <sup>2</sup> o K/W
Tensile Stength	200 KPa
Acoustic Performance	5 to 6 star
Compression (0.7MPa)	30%
Recovery (0.7MPa)	> 70%
Durabilty	Lifetime of flooring

Acoustic test results were conducted by Koikas Acoustics Pty Ltd. Test results are site-specific and were compared to the acoustic requirements of Part F5 of BCA (Building Codes of Australia), the standards prescribed by the Association of Australian Acoustical Consultants (AAAC) and City of Sydney Council's DCP 2012 requirements. All measurements were carried out following the guidelines and procedures outlined in AS/NZS ISO 140.7:2006 "Field measurements of impact sound insulation of floors" with the rating determined as per AS ISO 717.2:2004 "Rating of sound insulation in buildings and of building elements". Information gathered and provided by Paxwood Pty Ltd t/a Clever Choice Design Floors is given in good faith as a suggested guide in specifying Clever Choice Underlays, no guarantee or warranty is expressed or implied. No liability is accepted for any loss or damage, direct or indirect that may result from using the information and/or suggestions as actual conditions for use that are beyond our control.



Underlay Cork 3mm | 840171-MF



Images are an indication of colour only. Variations in colour & appearance are to be expected between images & samples

[www.cleverchoice.com.au](http://www.cleverchoice.com.au)



# Clever Underlay

# Cork 5mm



### Application

Our all-purpose ultimate density acoustic cork underlay for floating and direct stick application with Laminate, Hydro, Hybrid, Oak, Australian Timber and Bamboo <21mm in thickness.

### Suitable for

Home renovations, single, split-level, multi-storey homes plus most to all high-rise developments, multi-dwelling projects and all commercial.

### Features & Benefits

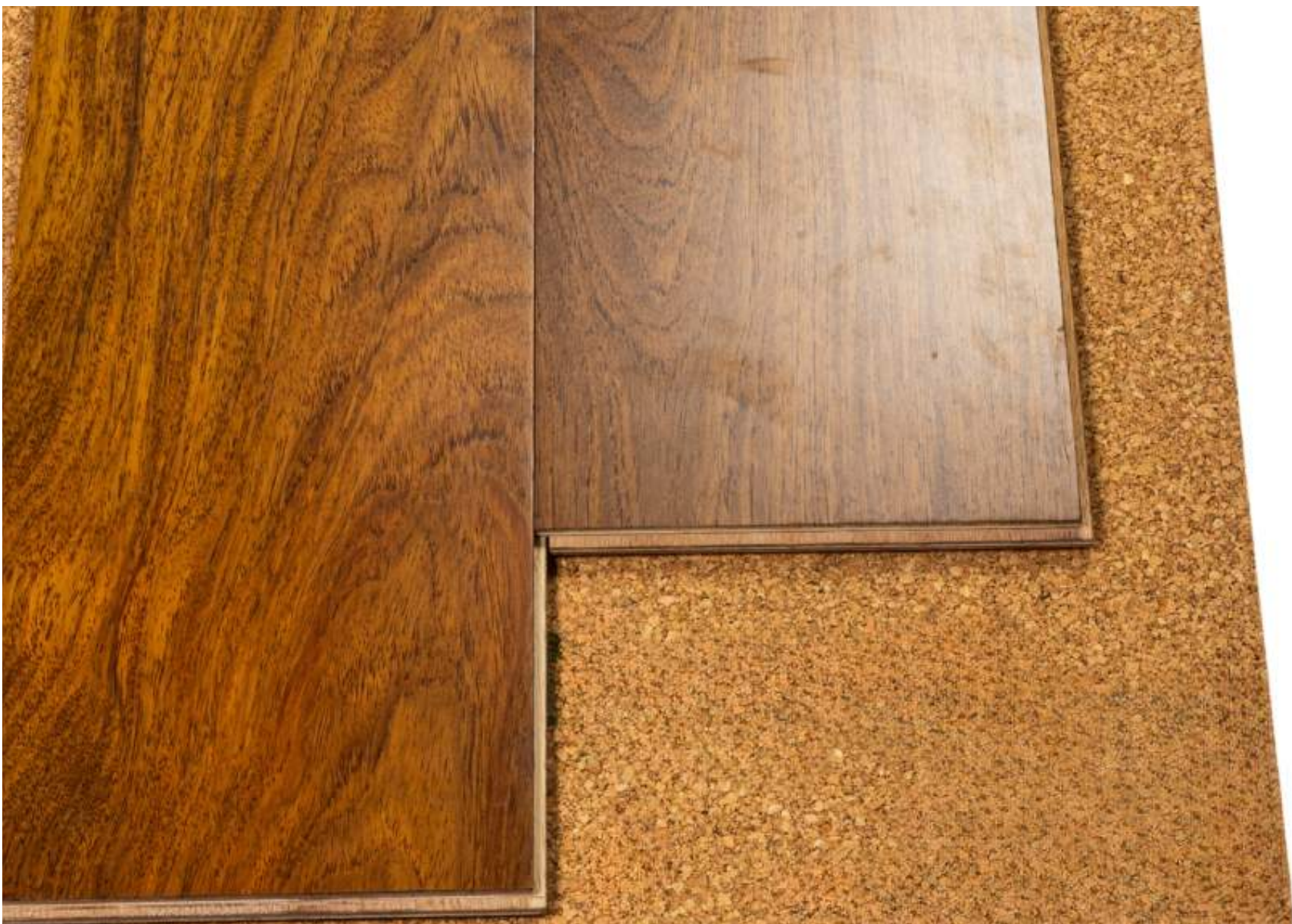
- ✓ Non-toxic, natural, environmentally friendly and fire retardant
- ✓ Lightweight rolls to make transportation and handling easier.
- ✓ High acoustic, thermal, and moisture-proof underlay for added temperature control and to help you save on your power consumption in your home.
- ✓ Suitable for underfloor heating to add warmth to your home.
- ✓ Stress crack protection for floor coverings.
- ✓ Does not absorb water or support the growth of mould in moist situations.

Specifications	Measure
Thickness	5mm
Width x Length	0.5m x 1m
Roll Size	100sheets/50m <sup>2</sup>
Specific Weight	150-200kgs/m <sup>2</sup>
Thermal Conductivity	0.038 W/mk
Thermal Resistance	0.132m <sup>2</sup> o K/W
Tensile Stength	200 KPa
Acoustic Performance	5 to 6 star
Compression (0.7MPa)	30%
Recovery (0.7MPa)	> 70%
Durabilty	Lifetime of flooring

Acoustic test results were conducted by Koikas Acoustics Pty Ltd. Test results are site-specific and were compared to the acoustic requirements of Part F5 of BCA (Building Codes of Australia), the standards prescribed by the Association of Australian Acoustical Consultants (AAAC) and City of Sydney Council's DCP 2012 requirements. All measurements were carried out following the guidelines and procedures outlined in AS/NZS ISO 140.7:2006 "Field measurements of impact sound insulation of floors" with the rating determined as per AS ISO 717.2:2004 "Rating of sound insulation in buildings and of building elements". Information gathered and provided by Paxwood Pty Ltd t/a Clever Choice Design Floors is given in good faith as a suggested guide in specifying Clever Choice Underlays, no guarantee or warranty is expressed or implied. No liability is accepted for any loss or damage, direct or indirect that may result from using the information and/or suggestions as actual conditions for use that are beyond our control.



Underlay Cork 5mm | 840173-MF



Images are an indication of colour only. Variations in colour & appearance are to be expected between images & samples

[www.cleverchoice.com.au](http://www.cleverchoice.com.au)



# Clever Underlay

# Clever Guard

## Floor Protection



### Application

Clever Guard Floor Protection is designed to be laid over your newly installed flooring to offer protection against damage while other trades are finishing their work and furniture is moved back into place. It is recommended to lay sheets of plywood or similar over the Clever Guard if you are intending to roll or drag heavy furniture or cabinetry into place to avoid damage.

### Suitable for

Home renovations, single, split-level, multi-storey homes plus most to all high-rise developments, multi-dwelling projects and all commercial.

### Features & Benefits

- ✓ Non-toxic, natural, environmentally friendly and fire retardant.
- ✓ Lightweight rolls to make transportation and handling easier.
- ✓ Does not absorb water or support the growth of mould in moist situations.
- ✓ Moisture-proof for added temperature control and floor protection
- ✓ Easily cut to the desired size for the surface you need to protect
- ✓ Lightweight and reusable, it provides superior protection in high-traffic work sit areas

Specifications	Measure
Thickness	2mm
Width x Length	1m x 25m
Roll Size	25m <sup>2</sup>
Moisture Proof	★★★★★
Suitable for underfloor heating	★★★★☆
Mechanical stress rating - Tare strength	★★★★☆
Durability - Suitable for floor protection	★★★★★

Acoustic test results were conducted by Koikas Acoustics Pty Ltd. Test results are site-specific and were compared to the acoustic requirements of Part F5 of BCA (Building Codes of Australia), the standards prescribed by the Association of Australian Acoustical Consultants (AAAC) and City of Sydney Council's DCP 2012 requirements. All measurements were carried out following the guidelines and procedures outlined in AS/NZS ISO 140.7:2006 "Field measurements of impact sound insulation of floors" with the rating determined as per AS ISO 717.2:2004 "Rating of sound insulation in buildings and of building elements". Information gathered and provided by Paxwood Pty Ltd t/a Clever Choice Design Floors is given in good faith as a suggested guide in specifying Clever Choice Underlays, no guarantee or warranty is expressed or implied. No liability is accepted for any loss or damage, direct or indirect that may result from using the information and/or suggestions as actual conditions for use that are beyond our control.



Clever Guard Floor Protection I 840202





# Clever Underlay

# Moisture Barrier

## Builders Film



### Application

Our all-purpose Moisture Barrier Builders Film 200µm for floating application with Laminate, Hydro, Hybrid, Oak, Australian Timber and Bamboo <21mm in thickness. It is recommended for new slabs & subfloors with suspected moisture issues, to be installed under appropriate underlay for extra protection.

### Suitable for

Home renovations, single, split-level, and multi-storey homes plus most to all high-rise developments, multi-dwelling projects and all commercial.

### Features & Benefits

- ✓ Quick and easy to install.
- ✓ Resistant to ageing and deformation.
- ✓ Ultimate moisture-proof barrier for added temperature control and to help you save on your power consumption in your home.
- ✓ Protects expansion joints.

Specifications	Measure
Thickness	0.2mm
Width x Length	1.95m x 50m
Roll Size	97.5m
Moisture Barrier	200µm
Durability	Lifetime of flooring



Moisture Barrier Builders Film | 840204



Acoustic test results were conducted by Koikas Acoustics Pty Ltd. Test results are site-specific and were compared to the acoustic requirements of Part F5 of BCA (Building Codes of Australia), the standards prescribed by the Association of Australian Acoustical Consultants (AAAC) and City of Sydney Council's DCP 2012 requirements. All measurements were carried out following the guidelines and procedures outlined in AS/NZS ISO 140.7:2006 "Field measurements of impact sound insulation of floors" with the rating determined as per AS ISO 717.2:2004 "Rating of sound insulation in buildings and of building elements". Information gathered and provided by Paxwood Pty Ltd t/a Clever Choice Design Floors is given in good faith as a suggested guide in specifying Clever Choice Underlays, no guarantee or warranty is expressed or implied. No liability is accepted for any loss or damage, direct or indirect that may result from using the information and/or suggestions as actual conditions for use that are beyond our control.



# Can a 6-star rating be achieved?



A 6-star AAAC rating can be achieved, but there are things you need to be aware of before making your underlay selection and finalising your purchase!

- i. Where is the flooring system being installed?
- ii. What specific requirements need to be met according to the Building Code of Australia (BCA), your Strata, and/or Local Council?
- iii. What is the construction quality of the building and the rooms? Does the ceiling have an insulated cavity, have the wall junctions been installed correctly, what is the thickness of the subfloor? Basically, was the building constructed with acoustic performance in mind?
- iv. Will the underlay suit the flooring type, location, and conditions of installation?

Clever Choice has an extensive range of flooring and underlay products. Some product choices when combined with the proper installation methods on certain sites meet the strict Building Code of Aust. 2004 (BCA) standards and better, can achieve a 6-star rating subject to individual site inspection and independent testing.

Impact noise test results are great as an indication, however, they really only validate the precise condition and location where the test was conducted. The floor type and flooring underlay are only two parts of a system.

Just keep in mind that there is not one single factor that determines the acoustic result. There are so many factors and elements that will contribute to the end acoustic result.

Need help selecting products to suit your purpose?  
Get in touch with our Clever Choice Sales Team  
07 5526 7399



Images are an indication of colour only. Variations in colour & appearance are to be expected between images & samples

[www.cleverchoice.com.au](http://www.cleverchoice.com.au)



# Technical UNDERLAY



	Silver 2mm	Comfort 2mm	Green IXPE 2mm	Tough 200µm 2mm	Sound 2mm	Acoustic 5mm	Rubber Acoustic 5mm	Cork 3mm	Cork 5mm	Clever Guard Floor Protection	Moisture Barrier Builders Film 50m
Suitable for <12mm Laminate, Hydro and Oak flooring	✓	✓	✓	✓	✓	✓	✓	✓	✓	✓	✓
Suitable for <14mm Laminate, Hydro and 14mm Oak flooring	✓	✓	✓	✓	✓	✓	✓	✓	✓	✓	✓
Suitable for <21mm Laminate, Hydro and 12mm Oak flooring	✓	✓	✓	✓	✓	✓	✓	✓	✓	✓	✓
Can be installed using direct stick or dual bond method							✓	✓	✓	✓	✓
Improvements to noise reduction	Basic	Moderate	High	High	High	High	Ultimate	Ultimate	Ultimate	-	-
Real timber sound and feel	Basic	Moderate	High	High	High	High	Ultimate	Ultimate	Ultimate	-	-
Thermal reduction for increased comfort	Basic	Moderate	High	High	High	High	Ultimate	Ultimate	Ultimate	-	-
Mould and moisture protection	Basic	Moderate	High	Ultimate	High	High	Ultimate	Ultimate	Ultimate	Ultimate	Ultimate
Can be installed over underfloor heating			✓	✓	✓	✓	✓	✓	✓	✓	✓
Independent acoustic approval		✓	✓	✓	✓	✓	✓	✓	✓		
Guaranteed for the life of the flooring	✓	✓	✓	✓	✓	✓	✓	✓	✓	✓	✓

**Definitions of Noise Metrics**

**FIIC:** Field Impact Insulation Class is a single-number rating of how well a floor system attenuates impact type sounds, such as footsteps. Calculated from third-octave band normalised impact sound pressure level data and referenced to 10 m2 as described in ASTM E989. The higher the single-number rating, the better its impact insulation performance.

**L'nT,w:** The Weighted Standardised Impact Sound Pressure Level when measured in situ referenced to a reverberation time (RT60) of 0.5 seconds. Used by the AAAC to determine their respective Star Rating.

**Ci:** Spectrum adaption term is a low frequency correction factor. Typically for massive floors such as concrete, the values are about zero while for timber joist floors Ci is positive because of the low resonant frequencies. Considers frequency range between 100 -and 2500 Hz.

**Ci(50-2500):** Same as above, but for the frequency range 50 -2500 Hz.

**Ci(125-2000):** Same as above, but for the frequency range 125 -2000 Hz.

AAAC Star R.	2	3	4	5	6
L'nT,W	65	55	50	45	40
FIIC	45	55	60	65	70
Comments	Below BCA 62	Clearly Audible	Audible	Barely Audible	Normally Audible

The information and data contained in this document are believed to be accurate and have been compiled from sources believed to be reliable at the time of preparation. Paxwood Pty Ltd will not be liable for claims relating to any party's use of or reliance on information and data contained herein regardless of whether it is claimed that the information and data are inaccurate, incomplete or otherwise misleading.

Users are advised to make their own determination as to the suitability of this information concerning their particular purposes and specific circumstances and obtain the most up to date information or independent testing.

AAAC Star Rating System is reproduced from the Association of Australasian Acoustical Consultants (AAAC) Guideline for Apartment and Townhouse Acoustic rating Version 1.0. The AAAC Star Rating system is designed to be complementary to the National Construction Code (formerly known as the Building Code of Australia), AS/NZS Standards, or local authority building ordinances.

Featured product images are to be used as a guide or point of reference only as colours may vary. Actual samples should be inspected at a flooring store near you before making a purchase decision. Specifications are subject to manufacturing tolerances and may be changed without prior notice. The availability of products may change at any time without notice. \*

Please refer to our website [www.cleverchoice.com.au](http://www.cleverchoice.com.au) for warranty terms and conditions, conditions, product installation guidelines, care and maintenance guides, or to download product test reports. These documents are also available from your place of purchase.

Images are an indication of colour only. Variations in colour & appearance are to be expected between images & samples

[www.cleverchoice.com.au](http://www.cleverchoice.com.au)





Pre-applied moisture-resistant barrier on Clever Silver, Comfort, Sound and Acoustic 5

Clever Sound Reduction

Thermal reduction for increased comfort

Cushions flooring to reduce impact noise from foot-fall

Manufactured for durability & resilience

Clever comfort underfoot

Real timber feel underfoot

Guaranteed for the life of the flooring



*Clever Underlay*

**SGS**

**atfa**

Australasian  
Timber Flooring  
Association®

t 07 5526 7399  
e sales@cleverchoice.com.au  
[www.cleverchoice.com.au](http://www.cleverchoice.com.au)



✓ Quality ✓ Style ✓ Value

*Fashion in flooring*